

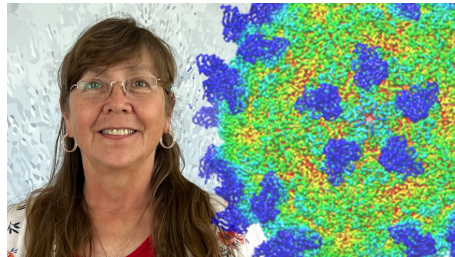
The Hormel Institute

UNIVERSITY OF MINNESOTA



RESEARCH

Could This Antibody Move Us Closer to Eradicating Poliovirus? The Hormel Institute Scientists Part of Study That Investigates



Susan Hafenstein, PhD, Professor and Cryo-EM Director at The Hormel Institute, University of Minnesota, and Carol Bator, Cryo-EM Project Specialist, are co-authors of a paper that was recently published in *Nature Communications*. The paper, entitled “A human monoclonal antibody binds within the poliovirus receptor-binding site to neutralize all three serotypes,” analyzes a human antibody that was observed successfully neutralizing all three serotypes of poliovirus - making it a promising candidate for the future development of antiviral treatments.

[Read more](#)

The Hormel Institute's Vijay Reddy, PhD, Receives Grant to Aid Development of Next-Generation Adenovirus Vectors

The Hormel Institute's Vijay Reddy, PhD, is the recipient of a year-long grant of nearly \$140,000 from the National Institute of Allergy and Infectious Diseases, National Institutes of Health. The research will explore designing and shielding adenoviruses, carrying

SARS-CoV-2 vaccine, the virus that causes COVID-19, to evade the host's immune system in order to reach the host's cells.

[Read more](#)



SUPPORT

Lyle Area Cancer Auction

When: Friday, January 12 - Saturday, January 13 (starts at 6:00 pm Friday)

Where: Lyle Legion and Maintenance Building

All money raised goes to the Eagles Cancer Telethon and is then donated to support cancer research at The Hormel Institute.

The Hormel Institute expresses our gratitude for the friendship and leadership of Gary Ziegler, who passed away earlier this year. He was a driving force and pillar of the Lyle Area Cancer Auction family and its success in raising more than \$3 million for cancer research over the past 44 years. Gary will be sadly missed.



Fifth District Eagles Cancer Telethon

The [Fifth District Eagles Cancer Telethon](#) is a nonprofit charity that operates year-round, culminating in a 20-hour live telethon each January. The money raised supports vital cancer research at The Hormel Institute, the Masonic Cancer Center at the University of Minnesota, and the Mayo Clinic Cancer Center.

The 70th Annual Eagles Cancer Telethon starts at 8:00 pm on Saturday, January 13, and runs through 4:00 pm on Sunday, January 14. [Learn more.](#)



Welcome to Brett Carlson, the new Executive Director of the Eagles Cancer Telethon, and thank you to past Executive Director Teresa Chapman for her years of leadership and continued support!

Paint the Town Pink





Paint the Town Pink (PTTP) is an annual campaign to raise funds for breast cancer and other cancer research at The Hormel Institute. PTTP allows researchers to further their research and fosters a greater connection with the community of Austin and communities throughout the region. PTTP has raised more than \$2 million to fund cancer research at The Hormel Institute.

2024 PTTP Events:

- **January 9:** Business Afterhours/ PTTP Kick-off
- **January 20:** Dutchtown Jumpers Cook-Off
- **January 27:** Plunging for Pink
- **January 28:** Pickle for Pink
- **January 31:** Austin Bruins Black & Gold Gala
- **February 3:** Paint the Rink Pink
- **February 9:** KAUS Radiothon
- **February 9-10:** Toss for a Cure Bean Bag Tournament
- **February 10:** Shooters for Hooters
- **February 17:** Fishing for a Cure
- **February 17:** VFW Pool Tourney
- **March 2:** Smashing Cancer Demolition Derby
- **March 2 -** VFW Dart Tourney

For more information about all of the PTTP events, [click here](#).

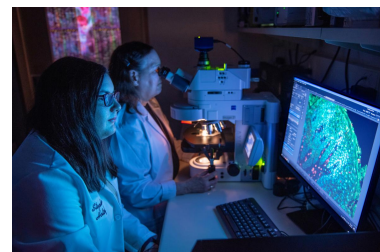
New Paint the Town Pink Event: Austin Bruins Black & Gold Gala



Tickets can be purchased at the Austin Bruins office and the Austin Country Club.

Thank You Donors

Thank you for including The Hormel Institute in your year-end gifts! Every dollar goes directly to research on cancer and other chronic diseases and supports our vision of inspiring discoveries that improve and extend human life.





COMMUNITY OUTREACH & EDUCATION

Applications Open for SURE Internship



Applications are now being accepted for The Hormel Institute's Summer Undergraduate Research Experience (SURE) Internship program. The SURE Internship program allows interns to work with scientists on biomedical research projects. This helps students expand their knowledge of basic research and gain firsthand experience learning about equipment and techniques that are generally not available in undergraduate academic programs.

Students are selected for the SURE internship program based on their high level of academic achievement, recommendations from academic leaders, college majors, and plans to pursue careers in science-related fields. Preference will be given to undergraduates going into their junior or senior year of college. In addition to lab experience, students participate in weekly professional development courses. At the conclusion of the internship, students will highlight their summer work and learning through a presentation and poster session. [Watch this video to learn more.](#)

Applications are due February 11. [Click here to learn more and apply.](#)

Blog: 10 Reasons to Donate Blood This Winter

Did you know that every 2 seconds, someone in the United States needs blood or platelets? That comes up to over 42,000 blood products a day and over 15 million in a year.

For the last 51 years, the U.S. has highlighted the importance of donating blood in the month of January, a time of year in which getting the needed amount of donors is most challenging. Only 3% of the U.S. population donates blood, even though about 65% are eligible, and during the cold and busy winter months, it becomes even more difficult to get that 3% to donate, let alone new donors.

[In this blog](#), The Hormel Institute's Clinical Research and Outreach Nurse Emily Heath explains how donating blood benefits all kinds of patients—and where you can donate in Austin this January.

[Read more](#)

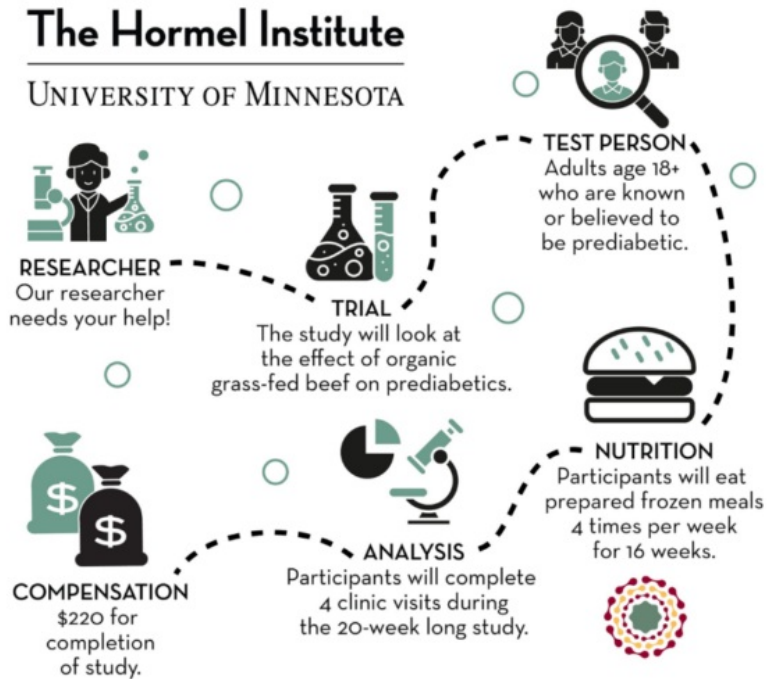


The Hormel Institute is hosting a blood drive with the Red Cross on Friday, January 19, from 9:00 am to 3:00 pm. Can't make it that day? There are still five other blood drives scheduled in Austin in the month of January. Just visit [Schedule a Blood, Platelet or](#)



CLINICAL STUDIES

Participate in a Dietary Study



Help with important research! At The Hormel Institute, University of Minnesota, we are looking for men and women 18 years or older to take part in a 20-week long dietary research study looking at the effects of organic grass-fed beef on gut health. Participants will get four free meals per week for 16 weeks and compensation up to \$220. For more information, visit redcap.link/HormelBeefStudy

Smoking and Alcohol Study

The Hormel Institute is looking for men and women 21 years of age or older who are in good health, daily cigarette smokers who are light/non-alcohol drinkers or moderate drinkers for a clinical study. The purpose of this study is to examine the effects of cigarette smoking and alcohol consumption on the formation of DNA damage in the oral cavity. The goal is to try to identify DNA damage that may contribute to cancers of the head and neck.

You will be asked to attend two clinic visits, each lasting about 60 minutes. The two visits will take place about 2 weeks apart. Prior to the clinic visits you will attend a virtual or in-person consent meeting to discuss the study in detail. You will be paid \$75 for each completed visit and a \$25 bonus for completing your daily surveys. **For questions or to see if you qualify, call (507) 355-5209 or email Research Coordinator Megan Moe at moe00193@umn.edu.**

10,000 Families Study

The Hormel Institute is partnering with the [10,000 Families Study \(10KFS\)](#) of the University of Minnesota. 10KFS is a study of family health across Minnesota, looking at how environment, genetics, and

daily life affect health and illness over time. We invite families from Mower County and broader Southeast Minnesota to join the study. Let's make sure our region is represented in this landmark project! Participants can come to The Hormel Institute for the in-person part of the study.

To find out if your family is eligible to join 10KFS, [click here](#). Questions? Email tenkfs@umn.edu.



The Hormel Institute UMN | www.hi.umn.edu



The Hormel Institute | 801 16th Ave NE , Austin, MN 55912

[Unsubscribe gaidenn@umn.edu](mailto:gaidenn@umn.edu)

[Update Profile](#) | [Constant Contact Data Notice](#)

Sent by info@hi.umn.edu powered by



Try email marketing for free today!